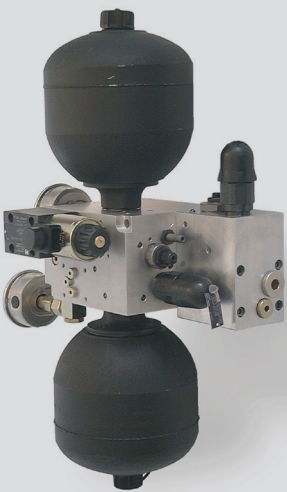


Control Unit for Hydraulic Counterweight



Design and Function

The control unit for hydraulic counterweight is designed for vertical and inclined machine axis. The construction corresponds to the newest employers liability insurance association (Germany) recommendation for new machines and plants. The compact designed control unit offers multiple connection and optional extension possibilities.

To secure the machine axis, it is fitted with a hermetically tight, piloted check valve, which is opened by an electric fast switching directional control valve. The machine axis can then move freely, weight compensated. The piloted check valve fitted between cylinder and accumulator is dimensioned so that at small pressure difference the flow is at maximum.

Specifications:

- The control unit for hydraulic counterweight consists of two control units fastened together. The control unit with fall protection and pressure control valve can be detached and can be positioned near or direct on the cylinder
- Maximum flow range at minimum pressure difference
- Mounting plates can be delivered as: cast iron or aluminium
- Directional control valve mounting place for optional engine break

Technical Data

- | | |
|---------------------------|--------------------------------|
| • Working pressure p | max 250 bar* |
| • Amount cylinder | random |
| • Voltage valves | standard 24 VDC |
| • Accumulator connections | 2 |
| • Amount accumulator | random* |
| • Piloted check valve | at Δp 1.5 bar 50 l/min |

*according dimensioning protocol

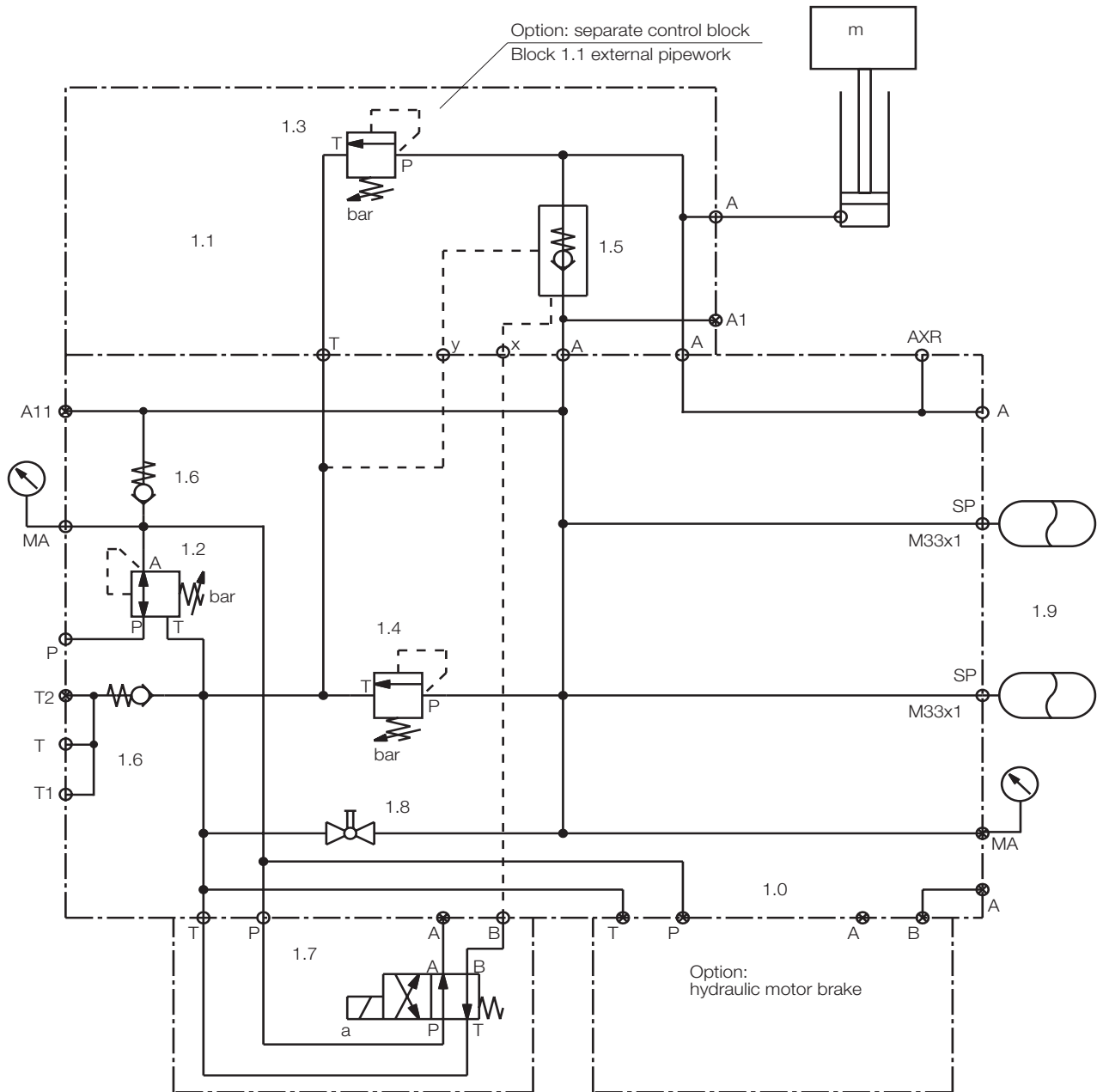
Applications

- Machining centres
- Lathes
- Industrial robots
- Universal machine tools

Options

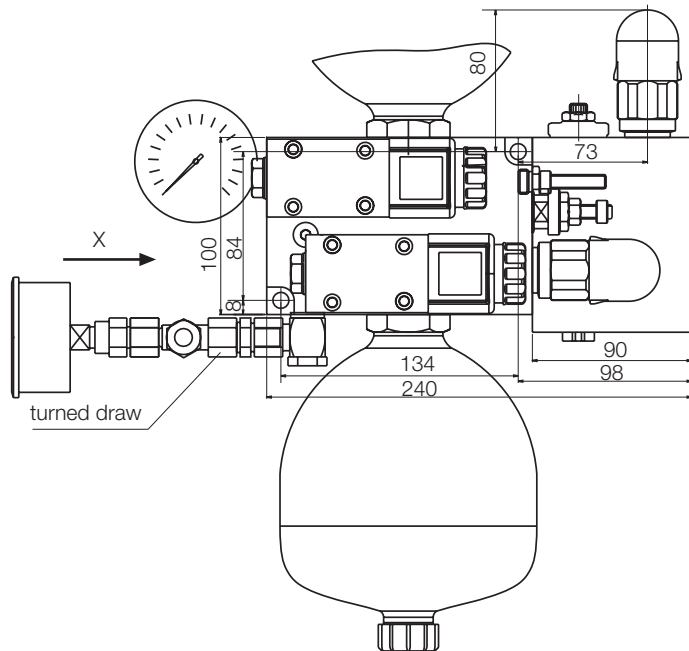
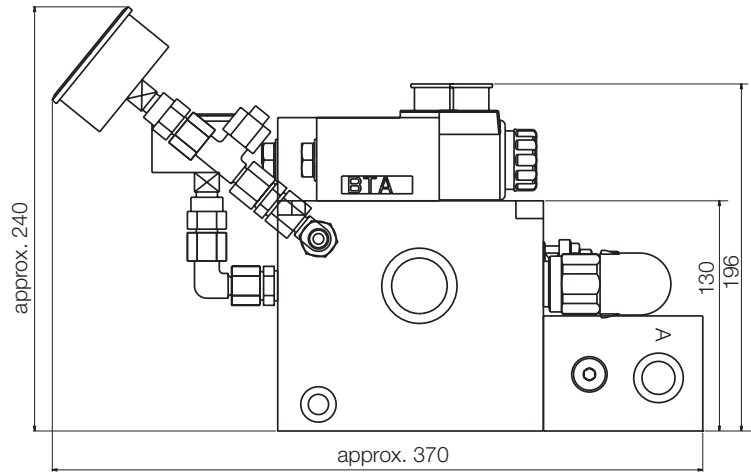
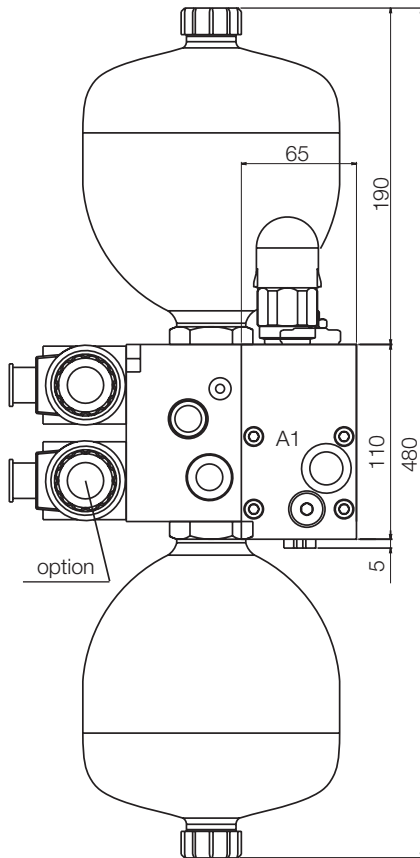
- Valve for hydraulic engine break
- Control block 1.0/1.1 separately to external pipe work

Hydraulic circuit

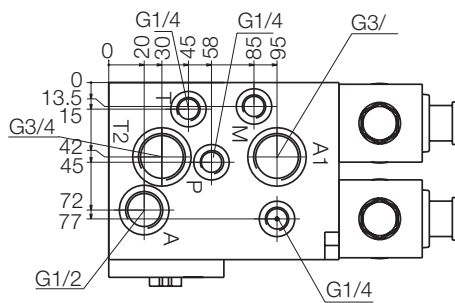


- 1.0 Mounting block
- 1.1 Fall protection
- 1.2 Pressure valve
- 1.3 Pressure protection cylinder
- 1.4 Pressure secure accumulator
- 1.5 Pilot check valve
- 1.6 Check valve
- 1.7 4/2 directional control valve
- 1.8 Hand drain valve
- 1.9 Accumulator

Dimensional drawing



View X



all dimensions in mm

Voith Turbo H + L Hydraulic
GmbH & Co. KG
Schuckertstraße 15
71277 Rutesheim, Germany
Tel. +49 7152 992-3
Fax +49 7152 992-400
sales-rut@voith.com

voith.com



VOITH
Engineered Reliability